

PDC Smart[®] Stretch Wristbands



PDC's latest innovation in RFID wristband technology. PDC Smart[®] Stretch Wristbands are made of ultra-comfortable, stretchy polyester material with securely sealed radio frequency identification (RFID) tag inside to reliably store and transfer data. Waterproof and durable for long lasting use.

PDC Smart® Stretch Wristbands

Made of ultra-comfortable, polyester material that stretches and adjusts to wrist size. Features custom full-color dye-sublimation printing on inside and outside of band, transforming every guest's wrist into a mini billboard. Wristband is removable, re-usable, and water-proof, making it ideal for multi-day use or season pass programs.

Wristband Strap

- **Material:** Polyester and nylon materials
- **Custom Printing:** Full color dye-sublimation printing inside/outside wristband surface
- **Dimensions:** (Circumference x width)
 - 185mm x 25mm: Ideal for large adult wrists
 - 160mm x 25mm: Ideal for youth and small adult wrists

RFID Inlay Wrap

- **Material:** Made of a special mix of nylon and cotton materials with enclosed RFID chip to reliably store and transfer data
- **Custom Weaving:** Choose up to 8 PMS thread colors per design
- **Custom Serialization:** Up to 8-digit variable data or Tag UID laser engraving on back of the RFID wrap supports guest registration or social media programs

Minimum Order Quantity: 500 wristbands per design / 10 packs of 50 wristbands

Lead Time: 4 weeks from artwork approval



Part Numbers:

Part Number	Size	RFID Inlay	ISO #
SCGA1-11-PDF-I	185mm	ICODE SLIX	ISO 15693-3
SCGB1-11-PDF-I	160mm	ICODE SLIX	ISO 15693-3
SCAA1-11-PDF-I	185mm	Mifare 1K	ISO 14443A
SCAB1-11-PDF-I	160mm	Mifare 1K	ISO 14443A
SCMA1-11-PDF-I	185mm	Mifare Ultralight	ISO 14443A
SCMB1-11-PDF-I	160mm	Mifare Ultralight	ISO 14443A

See RFID tag specifications on last page.

Other tag types available upon request.

PDC Smart® Stretch Wristband Principle Applications:

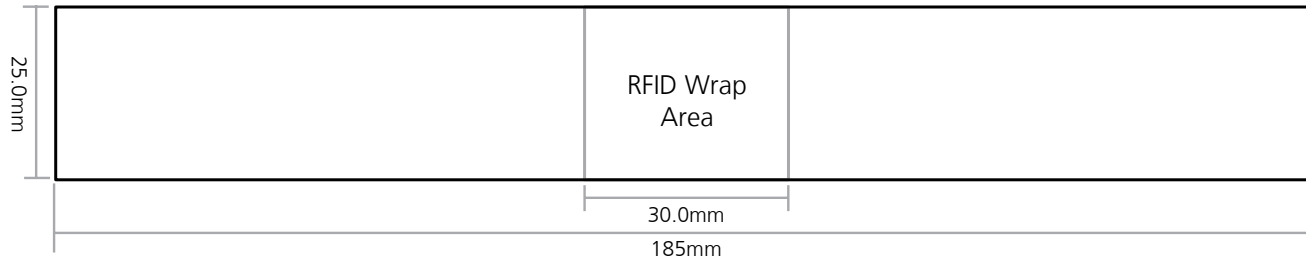
- Social Media Integration
- Cashless Payments
- Season Pass Programs
- Access Control & Security
- Promotional, Customer Loyalty and VIP Programs
- Keyless Entry
- Keyless Lockers

Stretch Wristband Strap Custom Specifications:

Dual-sided, full-color dye-sublimation printing accommodates logos, photos and other intricate graphics. For maximum branding impact, create two separate artwork files, one for the outside and one for the inside of band. Note: When designing your wristband strap, keep center 30mm free from important graphics or text for placement of the RFID wrap.

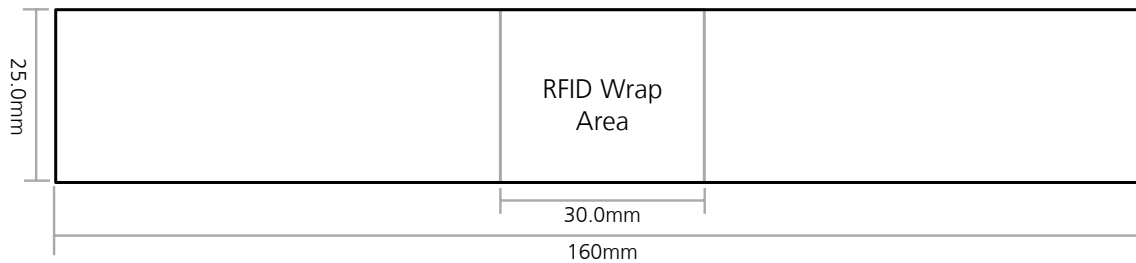
185mm Wristband Strap

Outside/Inside Imprint Area: 185mm x 25.0mm



160mm Wristband Strap

Outside/Inside Imprint Area: 160mm x 25.0mm



RFID Wrap Custom Specifications:



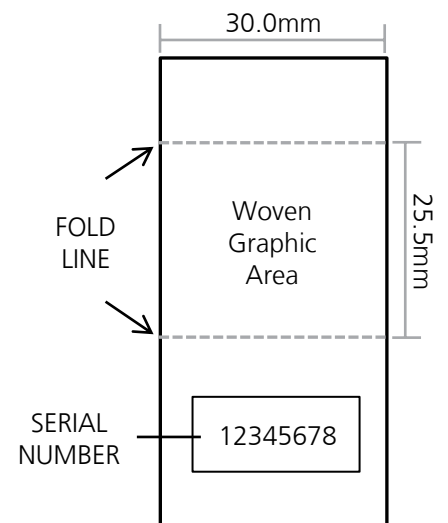
Woven Graphic (outside)

- Custom weave your logo or message in up to 8 PMS thread colors per design. **Note:** The RFID wrap area is completely separate of the wristband design and can be any 8 PMS colors of your choosing
- Custom area: 30.0mm x 25.5mm



Laser Etched Serial Numbering (inside)

- Optional 8-digit variable data or Tag UID laser engraved on inside of RFID wrap
- Unique number supports guest registration or social media programs



Artwork Specifications:

Full Color (CMYK, 4-color) Specifications:

- EPS or AI files are preferred
- High resolution (300-600 dpi)
- Outline all fonts in the artwork file

Spot Color Specifications:

- CLEAN, BLACK AND WHITE LINE ART is required
- Tones and screens need to be converted to solids
- Broken lines, weak lines, or smeared art cannot be imprinted
- Outline all fonts in the artwork files



No tones or screens (gray area)



No faxed art or art with broken or weak lines



Artwork must be clean, black & white line art

Preferred File Formats			
Format	Extension	Description	Note
EPS	.eps	Illustrator encapsulated post script	Convert text to outlines
AI	.ai	Adobe Illustrator	Convert text to outlines
TIFF	.tif	Tagged image file format	300-600 dpi or higher
JPG	.jpg	Joint Photographic Experts Group	300-600 dpi or higher

Note: If artwork is not supplied in the proper format and requires additional graphic design work, you may be billed for art charges.

No Logos / Artwork from a Website

We cannot use logos/artwork that are copied from a website as these images are low resolution and will produce a jagged, pixelated imprint with poor quality results.

E-Mail your Artwork

You may e-mail your artwork to artwork@pdccorp.com. Please include your company name, order number, contact name and phone number in your e-mail message.

Upload your Artwork Online

To upload your artwork through our website, go to www.pdcsolutions.com/artwork. Simply attach your artwork file.

Artwork Archives

We are happy to keep your card & key fob artwork on file for future re-orders. This will save you time and money. Please note, however, that if artwork is not used within a two year period, the archive artwork will be destroyed.

RFID Specifications:

	NXP ICODE SLIX	Mifare 1K	Mifare Ultralight
Operating Frequency	13.56 MHz	13.56 MHz	13.56 MHz
EEPROM Size	128 byte (1024 bit)	1024 byte (8192 bit)	64 byte (512 bit)
Memory Organization	32 blocks, 4 bytes per block	16 sectors, 4 blocks of 16 bytes	16 pages, 4 bytes per page
Unique Serial Number (UID)	8 byte (64 bit)	4 byte (32 bit)	7 byte, cascaded
RF Interface	ISO 15693-3	ISO 14443A	ISO 14443A
Data Retention (years)	10	10	5
Write Endurance (cycles)	100,000	100,000	100,000
Read/Write Range	3.5" / 8.9 cm	1.5" / 3.8 cm	1.5" / 3.8 cm

North America & Latin America

U.S. Headquarters
27770 N. Entertainment Drive, Suite 200
Valencia, CA 91355
Tel: 866.403.6526
Tel: 661.257.0233 ext 1556
Fax: 818.686.9336
Email: rfid@pdcsolutions.com

Asia Pacific

Tel: +1.661.257.0223
Fax: +1.818.686.9317
Email: asia@pdcsolutions.com

Europe, Middle East & Africa

European Headquarters
Rue de l'Industrie, 17
1400 Nivelles, Belgium
Tel: +32 67 89 56 56
Fax: +32 67 21 77 70
Email: info@pdcsolutions.eu



www.facebook.com/pdcsolutions